

# SUPPORT TO THE INSTITUTIONAL DEVELOPMENT OF THE GEORGIAN NATIONAL MUSEUM



This project is funded by the European Union

## GEORGIAN NATIONAL MUSEUM

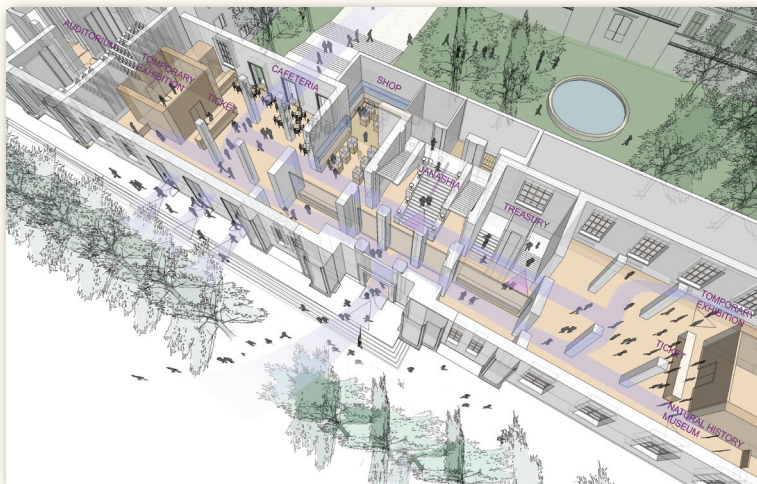
The Georgian National Museum was established in December 2004.

However its roots come from deeper past, when the Caucasus Department of the Geographic Society of Russian Empire was opened in 1852. At present the Georgian National Museum unites 10 important museums, two scientific institutions and the National Gallery. These museums are located in the capital city as well as in the different parts of country.

The Georgian National Museum owns over 2.5 Million objects. Wide range of collections cover diverse fields starting from nature history, archaeology, ethnography, geology and numismatics up to modern and contemporary art. The museums also keep photo and video archives, documents, etc.



Tbilisi, The National Museum of Georgia,  
The City in the Collection



The aim of the Institution is to establish a modern museum of international standards, which will effectively manage exhibitions, educational and scientific activities, storages, have improved administration and security system.

One way the Georgian National Museum intends to accomplish these goals is through constructive collaboration with the other cultural, educational, and research institutions as well as private sector.

In 2009 Georgian National Museum got unique opportunity to receive the support of European Union and implement Twinning Project. This project will facilitate to apply the best European practises in the daily work of the Institution.

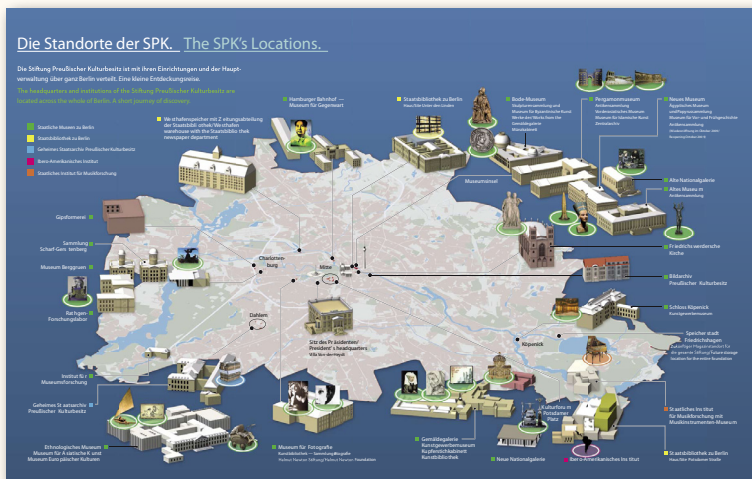
[www.museum.ge](http://www.museum.ge)

## THE DEUTSCHE GESELLSCHAFT FÜR TECHNISCHE ZUSAMMENARBEIT (GTZ)

The Deutsche Gesellschaft für Technische Zusammenarbeit (GTZ) is an international cooperation enterprise for sustainable development with worldwide operations. It is a national mandated body for Twinning and managed more than 100 Twinning projects for German public sector clients over the last ten years.

[www.gtz.de](http://www.gtz.de)

# PRUSSIAN CULTURAL HERITAGE FOUNDATION NATIONAL MUSEUMS IN BERLIN



**The Prussian Cultural Heritage Foundation** is one of the world's most important organisations in the field of culture. The Foundation is a state institution, which takes care after cultural heritage, conservation-restoration, expanding collection and scientific research. All of this assists to healthy relations between cultures and mutual understanding between the nations.

**The National Museums in Berlin**, housed in historical buildings, constitute a Universal Museum for the preservation,

research and mediation of treasures of art and culture of the entire history of humanity. Their collections embrace the areas of European and extra-European art, archaeology and ethnology.

The National Museums in Berlin, the origins of which lie in the foundation of the Royal Museum through Friedrich Wilhelm III of Prussia, belong to the Stiftung Preußischer Kulturbesitz. Further members of the Foundation are the State Library, the State Archive, the Ibero-American Institute and the State Institute for Music Research with the Museum of Musical Instruments. Supported collectively by the German government and the federal states, the National Museums in Berlin regard themselves as a national institution of cultural federalism in Germany.



The National Museums in Berlin can be found at five locations in Berlin: Museum Island Berlin / Mitte, Kulturforum Potsdamer Platz / Tiergarten, Charlottenburg, Dahlem and Köpenick. The following museums and institutes are co-ordinated through a joint general head office:

[www.hv.spk-berlin.de](http://www.hv.spk-berlin.de); [www.smb.museum](http://www.smb.museum)

## FEDERAL OFFICE FOR BUILDING AND REGIONAL PLANNING

The Federal Office for Building and Regional Planning (BBR) is a state administration of the Ministry for Traffic, Building and City Development. The department for buildings has the responsibility for the building duties if the state and in Berlin, Bonn and abroad and is also responsible for the cultural buildings of the Prussian Cultural Heritage Foundation.

The responsibility of the BBR for of the Prussian Cultural Heritage Foundation includes buildings for museums in Museumsinsel, Charlottenburg, Dahlem and Köpenick, the planning of storage rooms and restoration laboratories in the Museumshöfe and Friedrichshagen as well as the State Library.

[www.bbr.bund.de](http://www.bbr.bund.de)

## TWINNING PROJECT

### Objectives and approach

“**Support to the Institutional Development of the Georgian National Museum**” is a Twinning project funded within the frames of ENPI (European Neighbourhood and Partnership Instrument) program of the EU. It is the first Twinning project in the field of the cultural sector.

Main goal of the project is to strengthen the Georgian National Museum as an institution which is enabled to speed up culture as an essential component by the development of Georgia. For this it is laid within the Twinning project value on the systematic introduction of the best practices in the activities of the Georgian National Museum – in the fields of museum’s buildings planning, collection removal and the restoration and conservation of objects. Consultations, working groups, training courses and the visits of short-time experts will arise interrelated issues. Through the scope of this Twinning Project a unique possibility arises in the collaboration between two cultural facilities of national importance.

## PROJECT COMPONENTS

### COMPONENT 1

Support to the creation of the new Restoration  
Conservation Centre

### COMPONENT 2

Improvement of preventive conservation practice

### COMPONENT 3

Collection removal pilot case

### COMPONENT 4

Introduction of a set of standards and application in  
selected areas

### PROJECT LEADERS:

Professor **Hermann Parzinger**  
President of the Prussian Cultural Heritage Foundation

Professor **David Lordkipanidze**  
General Director of the Georgian National Museum

### PROJECT CO-LEADERS:

Professor Dr. **Günther Schauerte**  
Deputy Director General of the  
National Museums in Berlin

Dr. **Bernd Ebert**  
Senior Officer International Relations of the  
National Museums in Berlin

### RESIDENT TWINNING ADVISOR

Dr. **Manfred Nawroth**  
Tel +995 32 934821  
Email [mnawroth@museum.ge](mailto:mnawroth@museum.ge)

### RTA-COUNTERPART

**Mikheil Tstereteli**  
Tel: +995 32 996253  
[mtsereteli@museum.ge](mailto:mtsereteli@museum.ge)

### Project office:

Georgian National Museum  
3, Rustaveli Avenue, 0105 Tbilisi, Georgia  
[www.museum.ge](http://www.museum.ge)

### Delegation of the European Commission to Georgia

38, Nini Chkheidze Str., 0102 Tbilisi, Georgia  
Tel +995 32 943763  
[www.delgeo.ec.europa.eu](http://www.delgeo.ec.europa.eu)